

Memory
Mental Focus
Mental Clarity and Energy
Brain Function
Natural | Herbal
Neuronutrient bioactives



KEMIN
Compelled by Curiosity™



Neumentix
PHENOLIC COMPLEX K110-42

Redefining NeuroNutrition

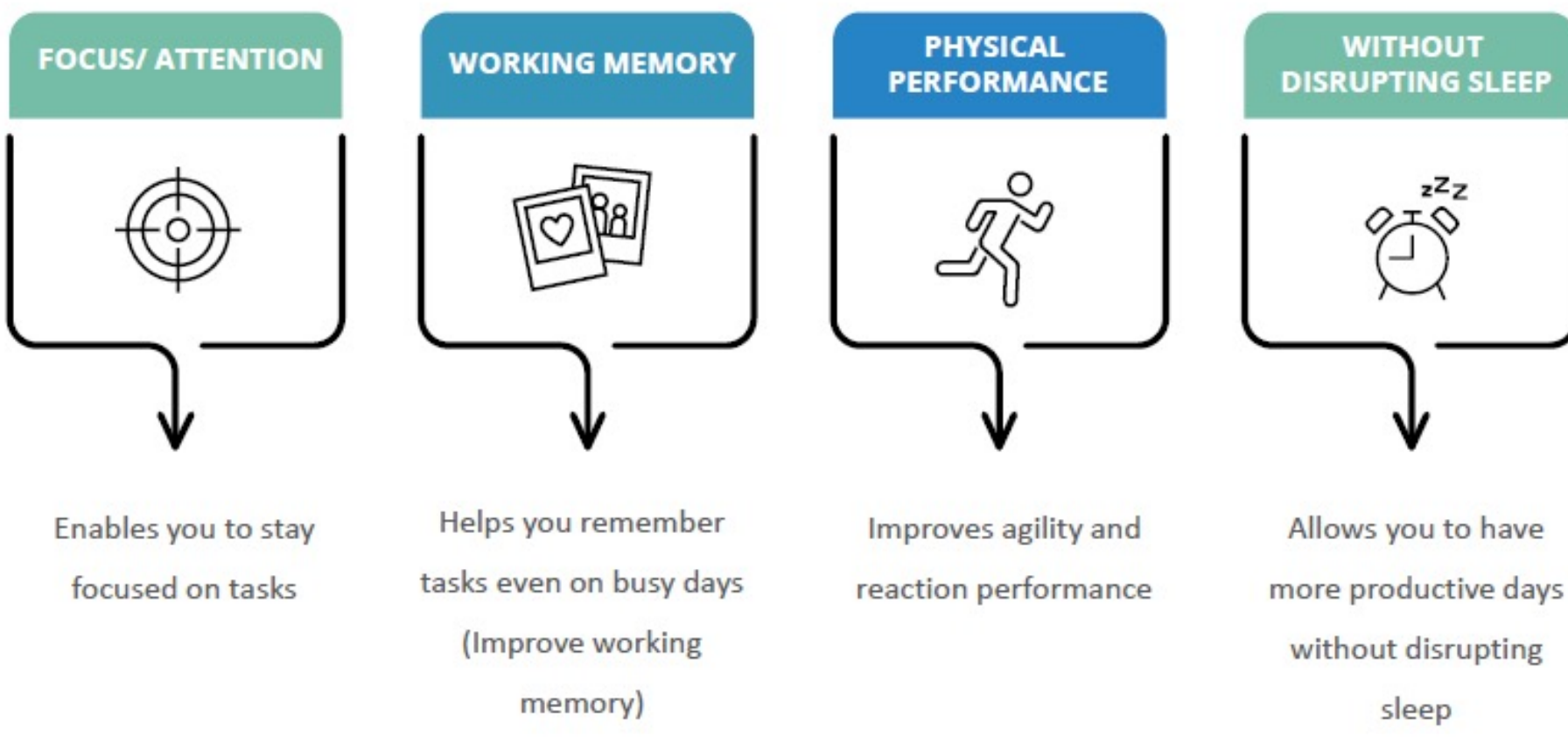
Naturally sourced nootropic made up of **antioxidant phenolic acid polyphenols**, that act on stressed and/or aged **neural tissue** through **multiple modes of action**, providing **NeuroNutrition** to adults looking for youthful healthy functioning eye and brain.

Neumentix®, a product of Kemin®, is clinically studied and provides **neural health benefits** in healthy young and older adults with **20 peer reviewed scientific publications**. Its target is to support cognitive and physical performance by connecting

focus/attention and reaction performance. Neumentix® supports neuronal adaptive homeostasis and works through multiple mechanisms supporting neural health and function. It is allergen-free, vegetarian, safe for daily use and non-GMO project verified.

WHY Neumentix® Neuronutrition

Scientifically proven cognitive results of Neumentix™



Mental Wellness

CONCEPT: Mental Performance
Smart Nutrition
For Sharper Mental Performance



CONCEPT: Agility
Smart Nutrition
Focus, Agility, Reaction Time



CONCEPT: Neural Health
Smart Nutrition
Aging | Eye and Brain



Neumentix® Concepts

Win the day with a Triple-play Performance Multivitamin



A multivitamin designed to support the daily performance demands of active and busy professionals — **Physical**, **Mental** and **Visual** Performance.

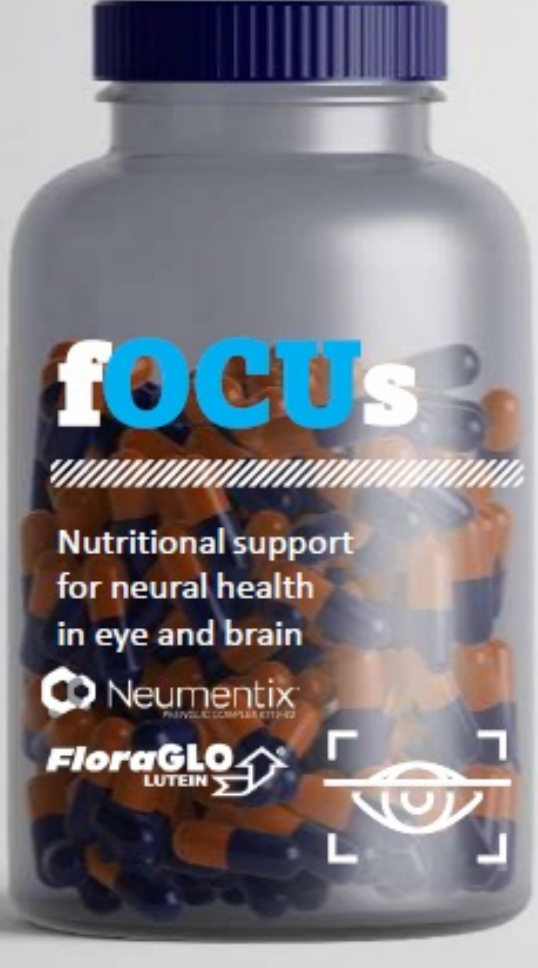
KEY CLAIMS

- Better physical, mental and visual functioning
- Works naturally to support cognitive function¹
- Supports blood flow to specific brain regions²
- Increases neural response² and activation³
- Improves visual performance and memory^{5,6}
- Enhances brain network connectivity⁷

OTHER INGREDIENTS

Natural caffeine, B vitamins, Vitamin D, DHA, Magnesium

Eye & Brain Neural Health Aging



PRODUCT IMAGES ARE FOR ILLUSTRATION PURPOSES ONLY
CONCEPT FOR DISCUSSION ONLY

BENEFITS

Healthy aging is more than just getting older, it's how the habits and choices we make throughout our life affect our cells, tissues and organs. It affects different organs differently, including the eye and the brain. The eye and the brain are vulnerable to the same stressors and share common degenerative mechanisms. Interestingly, you may still experience vision problems even with a healthy eye.

INGREDIENT

Kemin's solutions transcend the eyes' light-capturing function, addressing the complex neural tissues linking the eye and brain.

Neumentix® polyphenols work to counteract common degenerative pathways in the eyes and brain by nourishing neuronal tissue, supporting neurotrophins BDNF and NGF, maintaining eye-brain networks and nerve cell communication.

FloraGLO®: Clinically proven carotenoid nutrient that crosses the blood brain barrier and shown to support brain, nervous system and eye function.

Other ingredients:

B vitamins: contribute to the normal function of the nervous system, psychological function, reduction of tiredness and fatigue, maintenance of normal vision

DHA: normal vision and brain function



Brain



INGREDIENTS

- **Neumentix**: Clinically studied superior spearmint extract rich in polyphenols shown to improve working memory, sustained attention and focus.
- **FloraGLO Lutein**: Clinically proven carotenoid nutrient that crosses the blood brain barrier and shown to support brain, nervous system and eye function.
- **Vitamin D**: A vitamin important for neuroprotection and brain function
- **Thiamin**: A B vitamin that contributes to the normal function of the nervous system and psychological functions

HOW TO USE

Adults take daily for neurocognitive support

Reaction time Focus Agility Vision Skin



PRODUCT IMAGES ARE FOR ILLUSTRATION PURPOSES ONLY
CONCEPT FOR DISCUSSION ONLY

BENEFITS

Dominate the game, defy your limits: Unleash your athletic edge with agility and reaction time. Image reacting in a flash to that perfectly placed pass with pinpoint precision, scoring the winning point - That's the power of agility, visual memory & processing and reaction time. They're not just for elite athletes; they're game-changers for any athlete, at any level. Train your body and mind to be sharper, quicker, and more confident on the field, court, or track and protect your eye and skin

INGREDIENT

Kemin's advanced nutritional solutions are designed to support eye body and mind
Neumentix® This naturally-sourced spearmint extract is clinically shown to support focus, physical agility, reaction time and memory during the day without disrupting sleep at night. This unique phenolic complex has 6 mechanisms to promote neural health.

FloraGLO® Lutein: Clinically proven carotenoid nutrient naturally found in spinach and kale shown to support eyes, brain, and youthful skin.

Interesting combinations:

Whey Protein, Electrolytes, B, C and D vitamins

